

From: [ESP Utilities Group Ltd](#)
To: info@slpproject.co.uk
Cc: [Southampton to London Pipeline Project](#)
Subject: Our Reference: PE139421. Plant Affected Notice from ES Pipelines
Date: 10 September 2019 11:41:41
Attachments: [AffectedPlantEnquiryGuidelinesGas.pdf](#)
[ESN012780_Gas as laid.pdf](#)
[ESN020348_Gas as laid.pdf](#)

Esso
SLP Project
1180 Eskdale Road
Winnersh
Wokingham
RG41 5TU

10 September 2019
Our Ref: PE139421
Your Ref: AS20/SLP_0053
Your Ref: SLP-S570837

Southampton to London Pipeline Projects

Dear Sir/Madam,

Further to your enquiry received on 05/09/2019, I can confirm that ESP Utilities Group Ltd may be affected by the proposed works in the area of Southampton to London Pipeline Projects. ESP Utilities Group Ltd has a low pressure gas main serving the area in question at grid reference E481355, N151128 and E506485, N171831 and security of supply is vitally important.

Project drawing as laid extracts for these sites are enclosed (not to scale) for your information which show the approximate location of the ESP Utilities Group Ltd network close to the area of interest off Southampton to London Pipeline Projects. As your plans for the proposed work develop you are required to keep ESP Utilities Group Ltd regularly updated about the extent and nature of your proposed works in order for us to fully establish whether any additional precautionary or diversionary works are necessary to protect our network.

Arrangements can be set in place so that one of our representatives can meet on site (date to be agreed) and we will be happy to discuss the impact of your proposals on the network once we have received the details.

A list of precautionary measures is attached for your information. This must be passed on to the appointed contractors carrying out the work and any other associated parties.

ESP are continually constructing new gas and electricity networks and this notification is valid for 90 days from the date of this letter. If your proposed works start after this period of time, please re-submit your enquiry.

If you wish to discuss the matter further please contact myself or the team on 01372 587500, alternatively you can email us at PlantResponses@espug.com.

Yours faithfully,

Plant Protection Team

ESP Utilities Group Ltd



Bluebird House
Mole Business Park
Leatherhead
KT22 7BA
☎ 01372 587500 📠 01372 377996

<http://www.espug.com>

The information in this email is confidential and may be legally privileged. It is intended solely for the addressee. Access to this email by anyone else is unauthorised. If you are not the intended recipient, any disclosure, copying, distribution or any action taken or omitted to be taken in reliance on it, is prohibited and may be unlawful.

 **Please consider the environment before printing this e-mail**

PRECAUTIONS TO BE TAKEN WHEN CARRYING OUT WORK IN THE VICINITY OF UNDERGROUND GAS PIPES

ADVICE TO SITE PERSONNEL

MANAGEMENT NOTE

Please ensure that a copy of this note is read by your site management and to your site operatives.

Early consultation with ES Pipelines Ltd prior to excavation is recommended to obtain the location of plant and precautions to be taken when working nearby.

This note has been produced after consultation with and at the request of the Health and Safety Executive, the construction industry and the local authorities as an interim measure pending the issue of an HSE Guidance Note.

Introduction

Damage to ES Pipelines Ltd's plant can result in uncontrolled gas escapes which may be dangerous. In addition these occurrences can cause expense, disruption of work and inconvenience to the public.

Various materials are used for gas mains and services. Cast Iron, Ductile Iron, Steel and Plastic pipes are the most widely found. Modern Plastic pipes are either bright yellow or orange in colour.

Cast Iron and Ductile Iron water pipes are very similar in appearance to Cast Iron and Ductile Iron gas pipes and if any Cast Iron or Ductile Iron pipe is uncovered, it should be treated as a gas pipe. ES Pipelines Ltd do not own any metallic gas pipes but their gas network infrastructures may be connected to Cast Iron, Ductile Iron or Steel pipes owned by Transco.

The following general precautions apply to Intermediate Pressure (2-7 barg MOP), Medium Pressure (75 mbarg-2 barg MOP), Low Pressure (up to 75 mbarg MOP) and other gas mains and services likely to be encountered in general site works and are referred to within this document as 'pipes'.

Locating Gas Pipes

It should be assumed when working in urban and residential areas that gas mains and services are likely to be present. On request, E S Pipelines Ltd will give approximate locations of pipes derived from their records. The records do not normally show the position of service pipes but their probable line can be deducted from the gas meter position. E S Pipelines Ltd's staff will be pleased to assist in the location of gas plant and provide advice on any precautions that may be required. The records and advice are given in good faith but cannot be guaranteed until hand excavation has taken place. Proprietary pipe and cable locators are available although generally these will not locate plastic pipes.

Safe working Practices

To achieve safe working conditions adjacent to gas plant the following must be observed:

Observe any specific request made by E S Pipelines Ltd's staff.

Gas pipes must be located by hand digging before mechanical excavation. Once a gas pipe has been located, mechanical excavation must proceed **with care**. A mechanical excavator must not in any case be used within 0.5 metre of a gas pipe and greater safety distances may be advised by E S Pipelines Ltd depending on the mains maximum operating pressure (MOP).

Where heavy plant may have to cross the line of a gas pipe during construction work, the number of crossing points should be kept to a minimum. Crossing points should be clearly indicated and crossings at other places along the line of the pipe should be prevented.

Where the pipe is not adequately protected by an existing road, crossing points should be suitably reinforced with sleepers, steel plates or a specially constructed reinforced concrete raft as necessary. E S Pipelines Ltd staff will advise on the type of reinforcement necessary.

No explosives should be used within 30 metres of any gas pipe without prior consultation with E S Pipelines Ltd.

E S Pipelines Ltd must be consulted prior to carrying out excavation work within 10 metres of any above ground gas installation.

Where it is proposed to carry out piling or boring within 15 metres of any gas pipe, E S Pipelines Ltd should be consulted prior to the commencement of the works.

Access to gas plant must be maintained at all times during on site works.

Proximity of Other Plant

A minimum clearance of 300 millimetres (mm) should be allowed between any plant being installed and an existing gas main to facilitate repair, whether the adjacent plant be parallel to or crossing the gas pipe. No apparatus should be laid over and along the line of a gas pipe irrespective of clearance.

No manhole or chambers shall be built over or around a gas pipe and no work should be carried out which results in a reduction of cover or protection over a pipe, without consultation with E S Pipelines Ltd.

Support and Backfill

Where excavation of trenches adjacent to any pipe affects its support, the pipe must be supported to the satisfaction of E S Pipelines Ltd and must not be used as an anchor or support in any way. In some cases, it may be necessary to divert the gas pipe before work commences.

Where a trench is excavated crossing or parallel to the line of the gas pipe, the backfill should be adequately compacted, particularly beneath the pipe, to prevent any settlement which could subsequently cause damage to the pipe.

In special cases it may be necessary to provide permanent support to the gas pipe, before backfilling and reinstatement is carried out. Backfill material adjacent to gas plant must be selected fine material or sand, containing no stones, bricks or lumps of concrete, etc., placed to a minimum depth of 150mm around the pipes and well compacted by hand. No power compaction should take place until 300 mm of selected fine fill has been suitably compacted.

If the road construction is in close proximity to the top of the gas pipe, a "cushion" of selected fine material such as sand must be used to prevent the traffic shock being transmitted to the gas pipe. The road construction depth must not be reduced without permission from the local Highway Authority.

No concrete or other hard material must be placed or left under or adjacent to any Cast Iron pipe as this may cause fracture of the pipe at a later date.

Concrete backfill should not be used closer than 300 mm to the pipe.

Damage to Coating

Where a gas pipe is coated with special wrapping and this is damaged, even to a minor extent E S Pipelines Ltd must be notified so that repairs can be made to prevent future corrosion and subsequent leakage.

Welding or "Hot Works"

When welding or other "hot works" involving naked flames are to be carried out in close proximity to gas plant and the presence of gas is suspected, E S Pipelines Ltd must be contacted before work commences to check the atmosphere. Even when a gas free atmosphere exists care must be taken when carrying out hot works in close proximity to gas plant in order to ensure that no damage occurs.

Particular care must be taken to avoid damage by heat or naked flame to plastic gas pipes or to the protective coating on other gas pipes.

Leakage from Gas Mains or Services

If damage or leakage is caused or an escape of gas is smelt or suspected the following action should be taken at once:

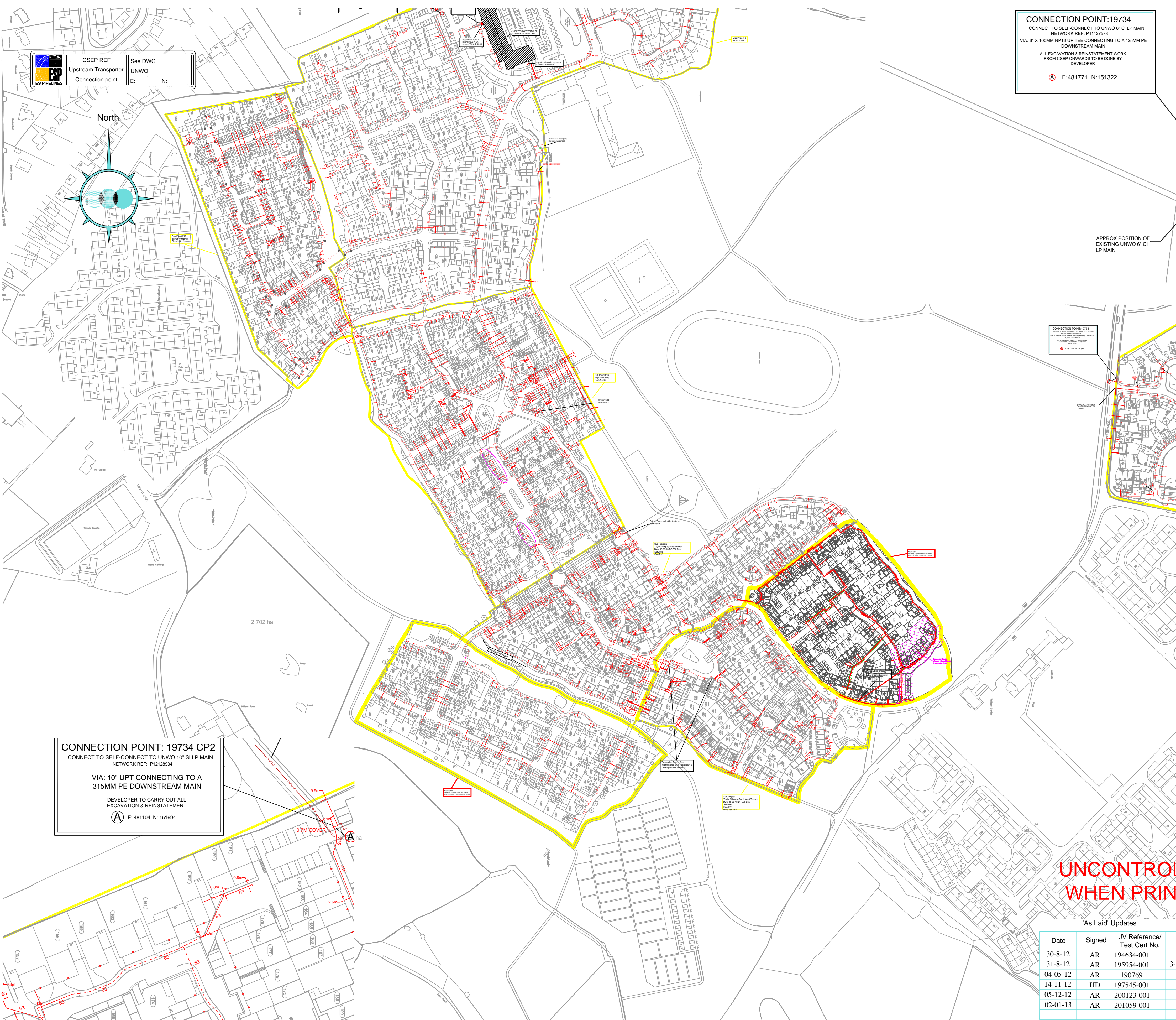
- ❖ Remove all personnel from the immediate vicinity of the escape;
- ❖ Contact Transco's National Gas Escape Call Centre, on: **0800 111 999**;
- ❖ Prevent any approach by the public, prohibit smoking, extinguish all naked flames or other source of ignition for at least 15 metres from the leakage;
- ❖ Assist gas personnel, Police or Fire Service as requested.

REMEMBER - IF IN DOUBT, SEEK ADVICE FROM E S PIPELINES LTD.

ES Pipelines Ltd can be contacted at:

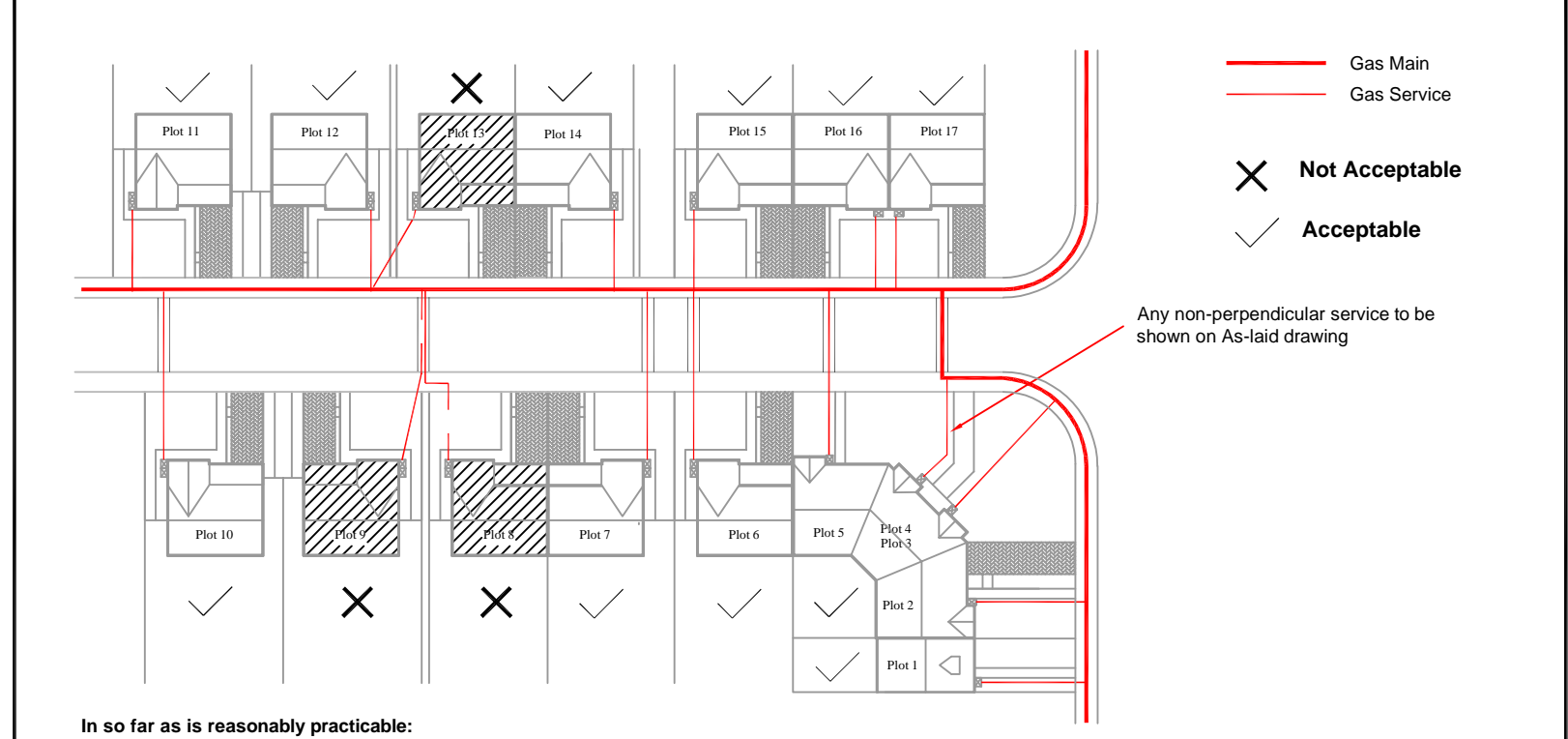
Office Address: Hazeldean, Station Road, Leatherhead, Surrey, KT22 7AA

Office Tel: 01372 227560; **Fax:** 01372 377996; **email:** plantresponses@espipelines.com



CONNECTION POINT: 19734
 CONNECT TO SELF-CONNECT TO UNWO 6" CI LP MAIN
 NETWORK REF: P11127578
 VIA: 6" X 100MM NP16 UP TEE CONNECTING TO A 125MM PE
 DOWNSTREAM MAIN
 ALL EXCAVATION & REINSTATEMENT WORK
 FROM CSEP ONWARDS TO BE DONE BY
 DEVELOPER
 E: 481171 N: 151322

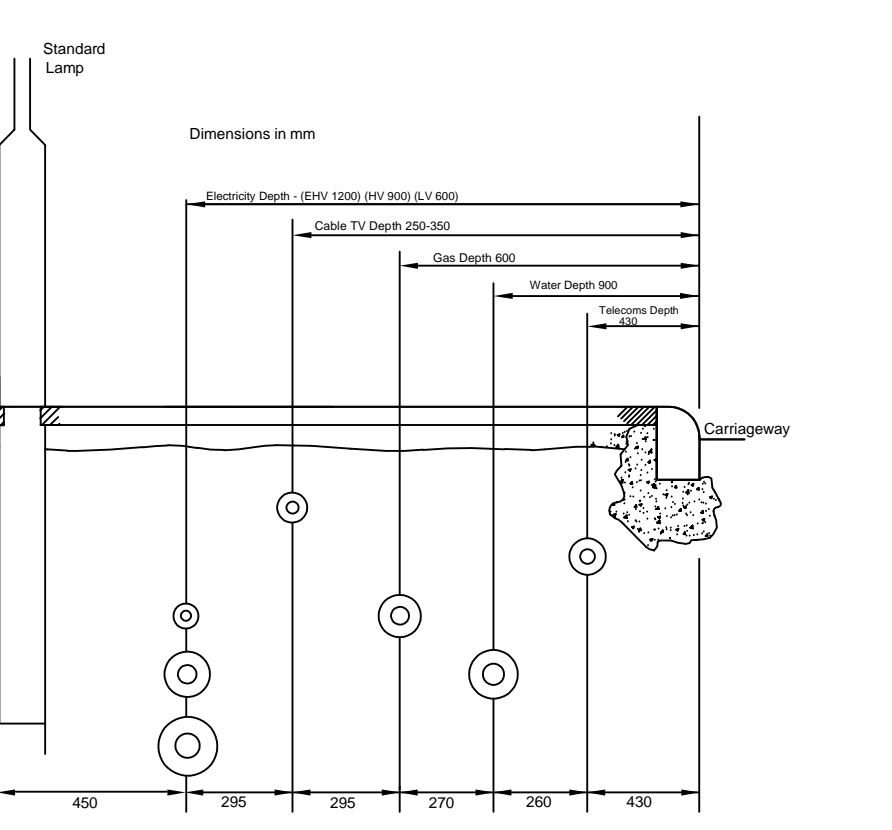
Gas Service - Route Selection Options



- In so far as is reasonably practicable:**
- Service routes selected should be perpendicular to the front of the property, and then take the most direct and shortest route from the meter box to the main, bearing in mind the limitation below.
 - Service routes should not be laid in any adjacent property and under no circumstances should a service run parallel to a main even over short distances.
 - Due to housing layouts, occasionally it is not physically possible to achieve the above. In such circumstances routes **MUST** be agreed with the designer before installation of the service. It will be required that the service location is recorded on the As Laid drawings
 - All services are to be install in full compliance with IGE/TD4 Edition 4

APPROX POSITION OF
 EXISTING UNWO 6" CI
 LP MAIN

DISPOSITION OF UNDERGROUND PIPES AND CABLES IN FOOTPATH



CONNECTION POINT: 19734 CP2
 CONNECT TO SELF-CONNECT TO UNWO 10" SI LP MAIN
 NETWORK REF: P12128834
 VIA: 10" UPT CONNECTING TO A
 315MM PE DOWNSTREAM MAIN
 DEVELOPER TO CARRY OUT ALL
 EXCAVATION & REINSTATEMENT
 E: 481104 N: 151694

**UNCONTROLLED
 WHEN PRINTED**

As Laid Updates

Date	Signed	JV Reference/ Test Cert No.	Plots covered
30-8-12	AR	194634-001	32-50,23-26
31-8-12	AR	195954-001	3-13,27-30,18-22
04-05-12	AR	190769	1-8,13-22
14-11-12	HD	197545-001	202-209
05-12-12	AR	200123-001	254-260
02-01-13	AR	201059-001	SQ OFF

Materials	Description
DI	Ductile Iron Main
CI	Cast Iron Main
ST	Steel main or service
MDPE (17.6)	Medium Density Polyethylene (SDR Rating) main or service
HDPE (11)	High Density Polyethylene (SDR Rating) main or service
Size	Description
12"	Metallic main or service - Imperial (nominal bore)*
150mm	Metallic main or service - Metric (nominal bore)
3"	Polyethylene main or service - Imperial (nominal bore)
90	Polyethylene main or service - Metric (outsidediameter)
* note - for Steel 18" denotes the pipe size where the designation changes from nominal bore to outside diameter	
Pressure	Description
LP	Low Pressure - up to 75 millibar gauge
MP	Medium Pressure - between 75 millibar and 2 bar gauge
IP	Intermediate Pressure - between 2 bar and 7 bar gauge
HP	High Pressure - above 7 bar gauge

Key for Mains & Service Pipework

- Existing LP mains or services operating up to 75 millibar gauge
- Proposed LP mains or services operating up to 75 millibar gauge
- Existing MP mains or services operating between 75 millibar and 2 bar gauge
- Proposed MP mains or services operating between 75 millibar and 2 bar gauge
- Existing IP mains or services operating between 2 bar and 7 bar gauge
- Proposed IP mains or services operating between 2 bar and 7 bar gauge

ESP PIPELINES
 ES Pipelines
 HAZELDEAN
 STATION ROAD
 LEATHERHEAD
 SURREY
 KT22 7AA
 Tel: 01372 227560 FAX: 01372 377996

Drawn by	Scale:	Date created:					
	1:2000	02/05/14					
DRAWING TITLE							
Queen Elizabeth Barracks Phase 1a, 1b, 1c, 1d Aldershot Road Fleet							
Drawing No	N0019734-1	REV:					
ESN Ref:	ESN012779/ESN012780	SHEET:					
Pipe Lengths (mtrs)							
	63mm	90mm	125mm	180mm	250mm	315mm	355mm
LP	T12	T13	T14	T15	T16	T17	T18
MP	T19	T20	T21	T22	T23	T24	T25
IP	T26	T27	T28	T29	T30	T31	T32
REV DETAILS OF REVISION			Date				
7-7	Work requests 275002, 278329, 286350 added Work request 231778 part processed			19/12/16			
7-8	WR 283992 added			05/01/17			
7-9	WR 257359 completed as per FWR team			13/01/17			
8-0	WR 231778 completed			15/02/17			

This Plan shows only the pipes owned by E S Pipelines Ltd in its role as a licensed Gas Transporter (GT). Gas pipes owned by other GTs, and also privately owned, may be present in the area. Information with regard to such pipes should be obtained from the owners. The information shown on this plan is given without obligation, or warranty. The accuracy thereof cannot be guaranteed. All service pipes are not necessarily shown but their presence should be anticipated. No liability of any kind whatsoever is accepted by E S Pipelines Ltd, its agents or servants, for any error or omission. Safe digging practices, as detailed in Health and Safety booklet HS(G)47 'Avoiding danger from underground services', must be used to verify and establish the actual position of mains, services and other plant on site before any Mechanical plant is used. It is your responsibility to ensure that this information is provided to all persons (either direct or contract labour) working for you on or near gas apparatus. The information on this plan should not be referred to beyond 28 days following the date of issue. **DATE OF ISSUE:**

REPRODUCED FROM THE ORDNANCE SURVEY MAP WITH THE SANCTION OF THE CONTROLLER OF HER MAJESTY'S STATIONARY OFFICE © CROWN COPYRIGHT RESERVED.
 THIS DRAWING IS THE COPYRIGHT OF E.S. PIPELINES LIMITED AND MAY NOT BE REPRODUCED WITHOUT WRITTEN CONSENT ©

7-1	Added WR 271987, part processed WR 257359.	27/09/2016					
7-2	WR 274743 completed.	28/09/2016	6-6	Part processed work request 216800, 235495, 216800, 207425	24/05/2016	6-1	As-laid data added from work request 214023 & 219190
7-3	Meters moved on Block 4 of N7019734-13. Section of 63 main added to accommodate for new services.	18/10/2016	6-7	Added work request 187398.	01/06/2016	6-2	As-laid data added from work request 236537
7-4	Services amended on plots 534-541, N7019734-13	03/11/2016	6-8	Added work request 245628.	04/07/2016	6-3	As-laid data added from work request 235042
7-5	WR 266985 added.	14/11/2016	7-0	Section of 63 main updated N7019734-13.	05/07/2016	6-4	Mains/Services altered block 2 plots 374-381
7-6	ESRI Legacy data added	14/12/2016		Added WR 235495, 207425, 255483, 255240, 258370, 216800.	22/07/2016	6-5	New section of 90mm main added plots 575-599 to avoid road crossing N7019734-6

